

B-4 ISC SOLENOID VALVE CONTROL SYSTEM CHECK

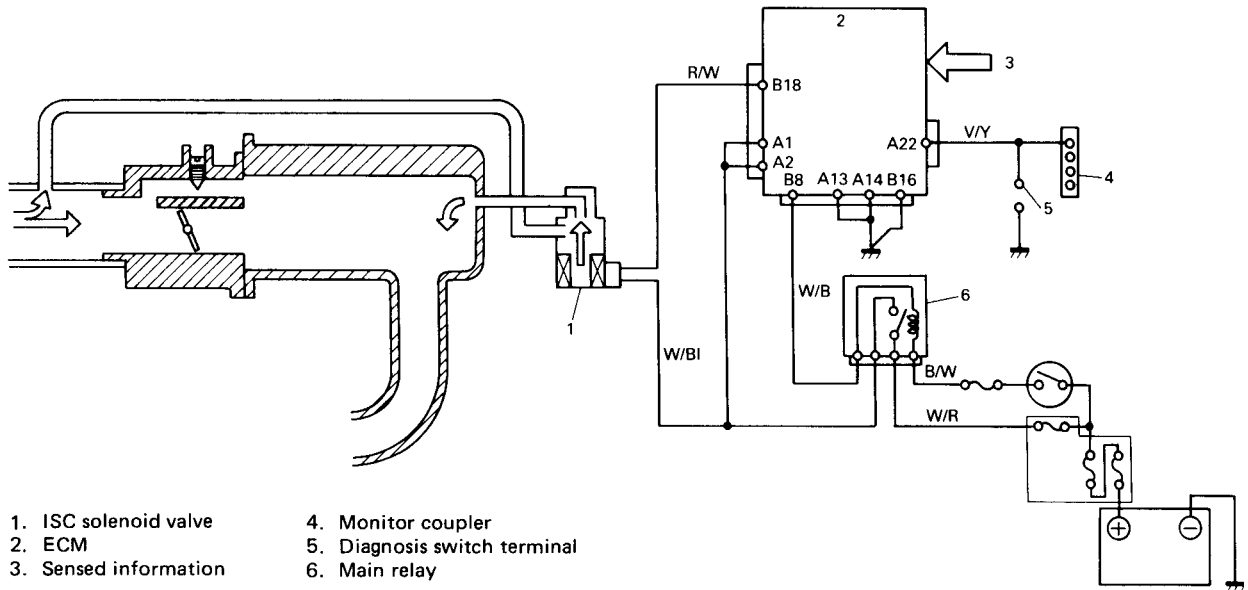
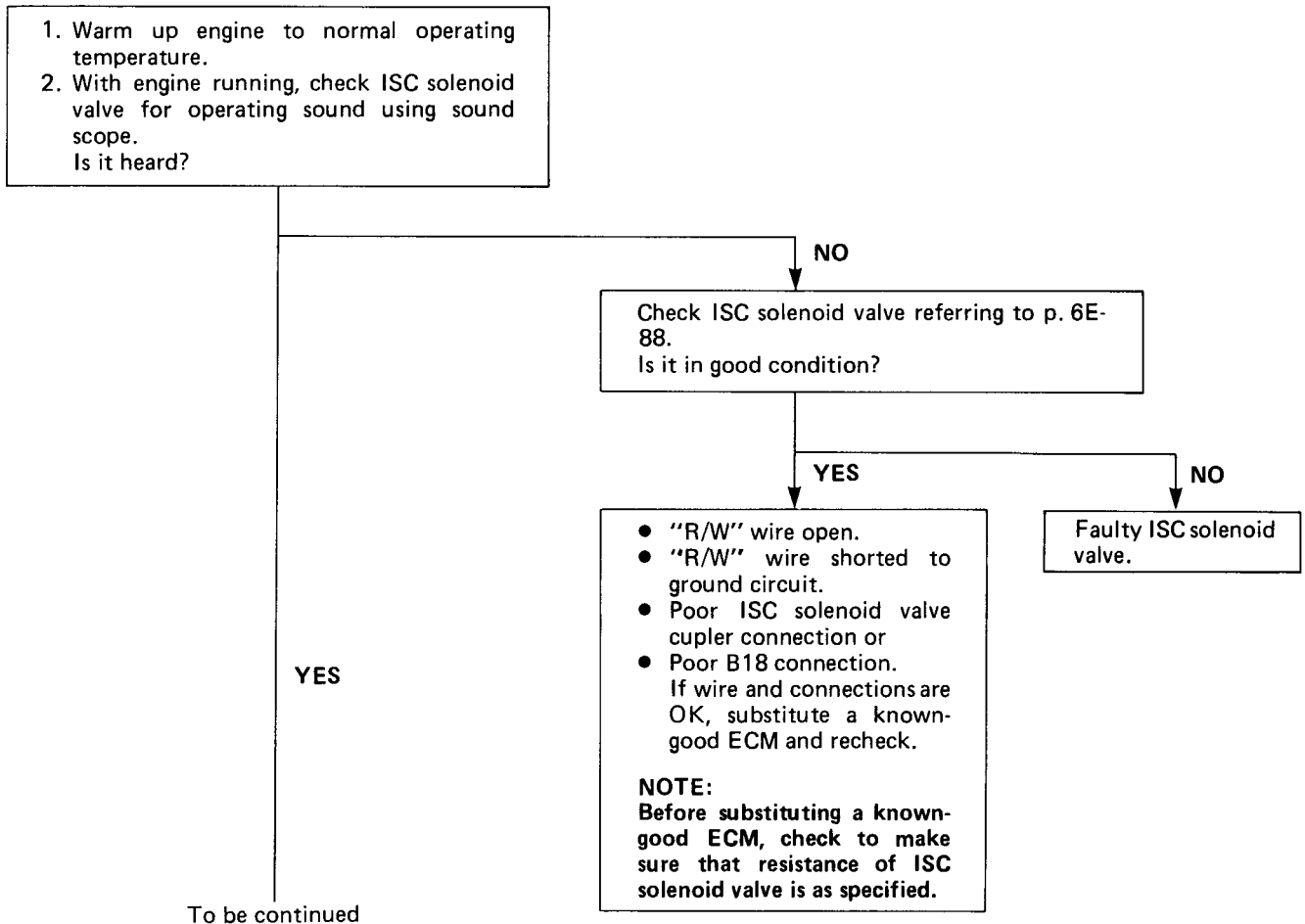


Fig. 6E-85 ISC Solenoid Valve Circuit



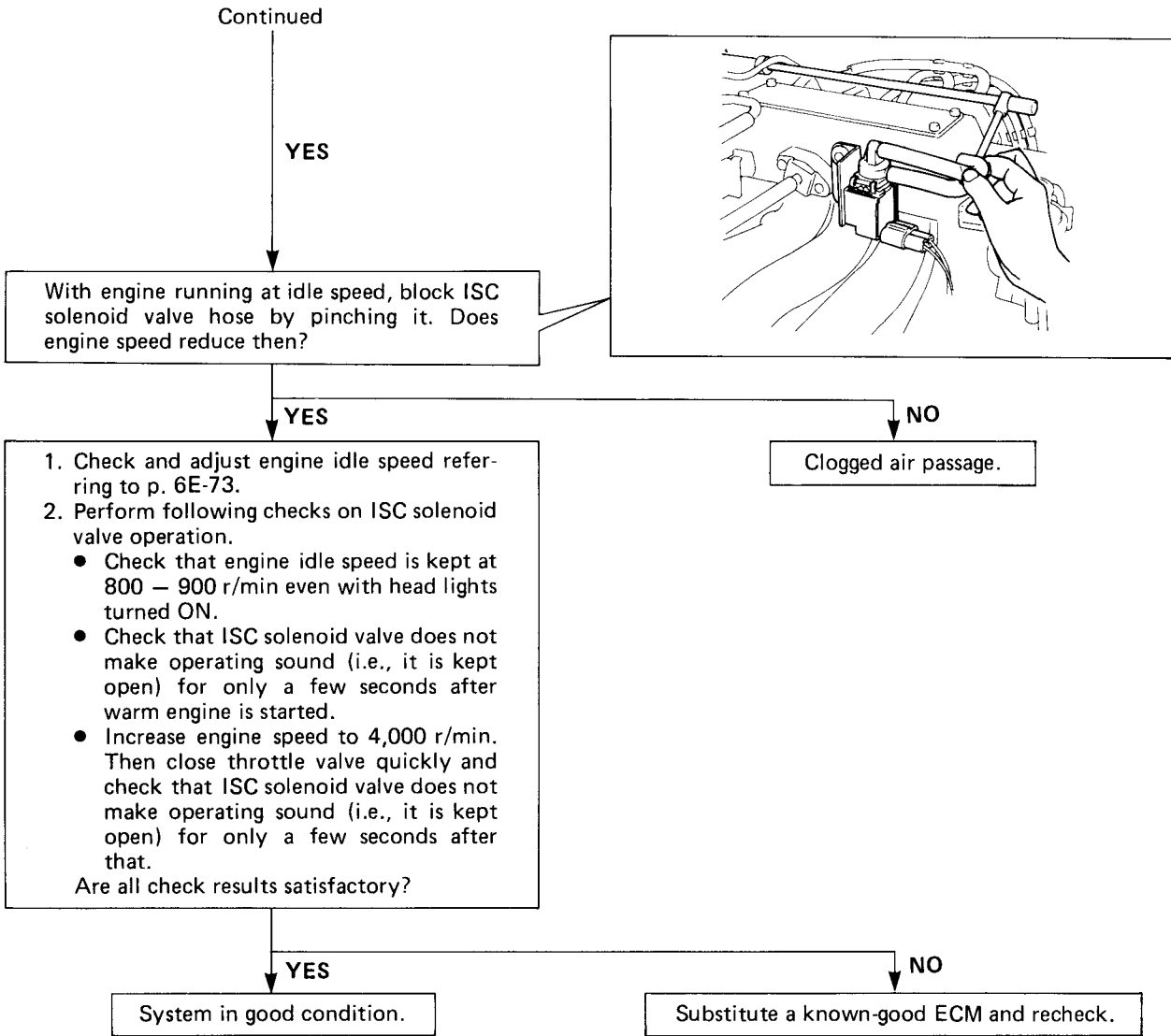


Fig. 6E-85

ISC SOLENOID VALVE

Inspection

1. With ignition switch "OFF", disconnect ISC solenoid valve coupler.
2. Check resistance between each two terminals of ISC solenoid valve.

| | |
|----------------------------------|------------------|
| Resistance of ISC solenoid valve | 30 – 33 Ω |
|----------------------------------|------------------|

If it is within specification, proceed to next operation check. If not, replace.

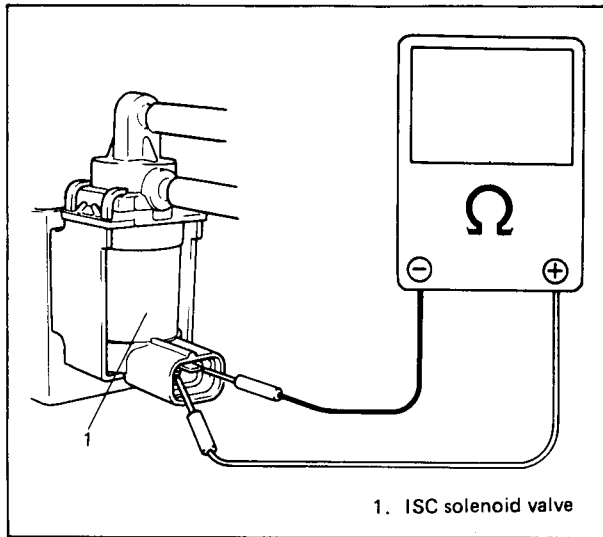


Fig. 6E-136 Checking Resistance

5. Under above condition, connect 12V-battery to ISC solenoid valve terminals and check that air is drawn into the ISC solenoid valve.

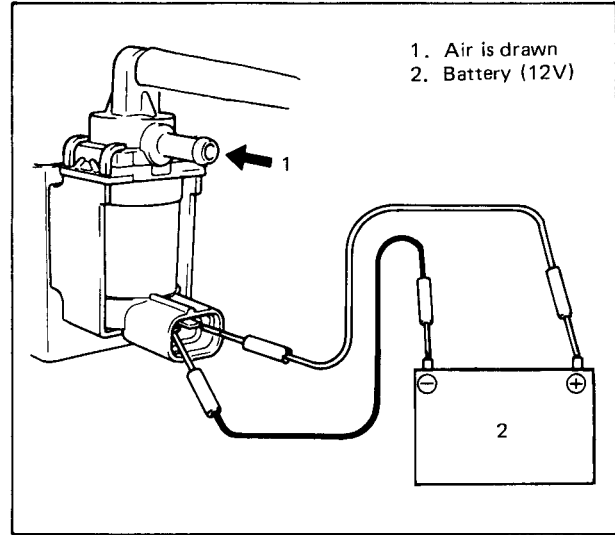


Fig. 6E-138 Checking ISC Solenoid Valve (2)

If check result is not satisfactory, replace ISC solenoid valve.

6. Connect hose and coupler securely.

3. Warm up engine to normal operating temperature.
4. With engine running and ISC solenoid valve coupler disconnected, disconnect ISC solenoid valve hose of underside as shown below. In this state, check that air is not drawn into the ISC solenoid valve.

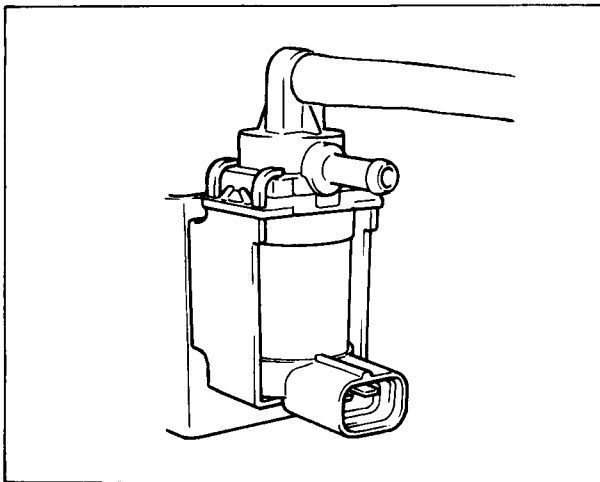


Fig. 6E-137 Checking ISC Solenoid Valve (1)